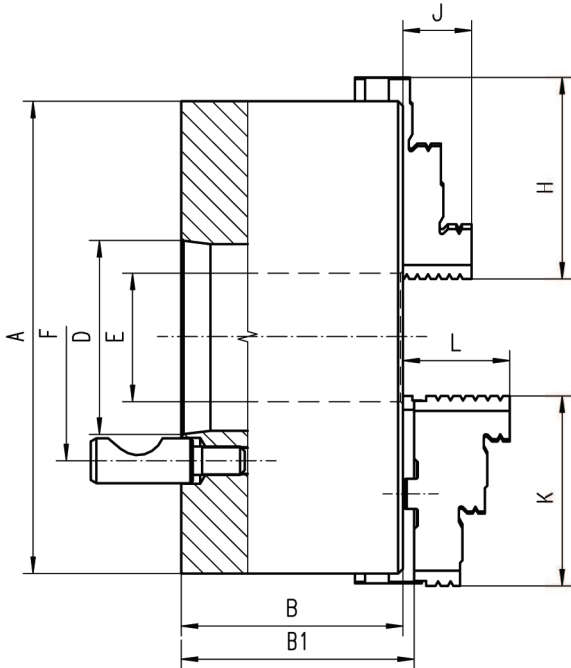


Type 3544, 3545

3 JAWS, STEEL BODY (DIN 55029)



Features:

- 3 jaw, self-centering scroll chuck with manual gripping
- Steel body extends machine life while providing higher rigidity and greater wear resistance, enabling the chuck to withstand higher machining forces
- Hardened and ground working surfaces ensure longer life with maintained accuracy and repeatability
- Balanced scroll plate allows higher rotation speeds without excess vibration
- Mounted directly to CAMLOCK type machine-tool spindles

Application:

- This chuck is designed for all types of workshop machining operations on conventional lathes

Options:

- Hard solid jaws (type 3544) or hard two-piece jaws (type 3545)
- Chuck design: our engineers can work with you to implement any product design changes you may require

Chuck size A	125		160			200			250		315			400		
Short taper 1:4	3	4	3	4	5	4	5	6	6	8	6	8	11	8	11	
B	59,5		68			78			89		96,2		111,7		108	
B1	64,8		72,8			82,8			92,8		101,3		116,8		116,8	
D	min.	53,975	63,513	53,975	63,513	82,563	63,513	82,563	106,375	106,375	139,719	106,375	139,719	196,869	139,719	196,869
	max.	53,988	63,526	53,988	63,526	82,578	63,526	82,578	106,390	106,390	139,734	106,390	139,734	196,887	139,734	196,887
E	32		42			55			76		103			136		
F	70,6	82,6	70,6	82,6	104,8	82,6	104,8	133,4	133,4	171,4	133,4	171,4	235	171,4	235	
Qty. of mounting screws	3	3	3	3	6	3	6	6	6	6	6	6	6	6	6	
H	51	51	70	70	70	85	85	85	105	105	125	125	125	145	145	
J	20	20	32	32	32	29	29	29	34	34	43	43	43	55	55	
K	56	56	67	67	67	80	80	80	95	95	110	110	110	127	127	
L	40	40	43	43	43	45	45	45	53	53	57	57	57	67	67	
Approx. weight [kg]	5,0		9,0			19,0			32,0		51,0			101,0		

Type 3544	Standard accessories		1 set of outside hard solid jaws		1 set of inside hard solid jaws		1 wrench	Optional accessories		1 set of soft solid jaws
Type 3545			1 set of hard top jaws		1 set of hard master jaws		1 wrench			1 set of soft top jaws